

Message from the Head

Dear Parents/ Carers,

What a wonderful half term we have had! Despite rather a lot of illness, we have managed to have an action packed 6 weeks. From Bikeability and the flight simulator, to Young Voices and Children's Mental Health Awareness week!

A huge well done to Robin class this week on their assembly. It was lovely to see so many parents and carers. I was blown away by the children's dinosaur topic knowledge (even when put on the spot with question time), and the dinosaur rap will certainly stay with me. I hope that the children's tips on their 'Be Still' Agents of Changes notes will also be positive for your wellbeing.

Thank you to all of you who were able to bake or donate cakes for the Valentines Day Bake Sale. The PTFA managed to raise £139.70! Information will be coming out to you soon from the PTFA, but this money is going towards library books and some new equipment for the playground, as requested by the School Council.

Please note that the menus will be changing over after half term and can be found on the school website, and are [linked here](#).

I hope that you have an enjoyable half term.

Best wishes,
Mrs Charlotte Brown (Headteacher)

WWI Heritage Flight Simulator

Write up by Harriet Parmenter

On Thursday 8th February ...

We had a flight simulator in the car park, inside, one of the men that helped was helping the children into the simulator. There was controls and it felt like we were acutely flying. Some of the children felt a little sick when they had a go. One of the men was reading a powerpoint to the children that all ready had go's on the simulator.

~

In addition, children in Owl class took part in a poetry workshop. They wrote poems on seeded paper that are due to be dropped by plane over France.

Well done to Harriet, Heath and Felix from Kingfisher class, and Erin, Esme and Thomas from Owl class for being selected by the volunteers to win prizes. This was for their engagement in the sessions as well as thought provoking poems from Owls.



Letters from the Lighthouse - Emma Carrol

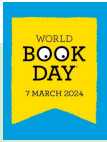
As part of our history topic about WWII, we read extracts from this book. I liked what I'd read, so much, that I decided to read the whole book. It is full of adventures of a mystical kind and takes you on a rollercoaster of emotions.

The story originally starts in London, 1941. Three children (Sukie – the eldest, Olive – the middle child and Cliff – the youngest) decide to go to their local picturehouse to occupy themselves. Suddenly, the air raid siren goes off and, while Olive and Cliff evacuate and head to the shelters, Sukie still hasn't come back from the lavatory.

It is the last time the two younger siblings see their older sister before being evacuated to a coastal town in Devon. Whilst there, Olive discovers a mystery which ties her missing sister to a plot as dangerous as it is mysterious...

It is simply the best book which I've ever read. Like Mr Pearce said to me, this will become a new children's classic (also suitable for adults) WWII fiction text amongst the likes of 'Goodnight Mr Tom', 'The Machine Gunners' and 'Friend or Foe'.

Gracie-Sue Hodgson



World Book Day 2024

Miss Snodgrass is busy planning ahead for another fabulous World Book Day. After the fun of last year, we wanted to continue to mark the occasion. On Thursday 7th March, children are invited to dress up as their favourite book character. The PTFA will be hosting the costume swap if you'd like to donate any old costumes and pick-up something different. In the morning, we will be holding a parade in the playground.

Throughout the afternoon children will be working in their house teams on different activities led by class teachers.

The special World Book Day lunch [menu is here](#). Please let the school office know if your child would like to have lunch in Thursday 7th March.

Messing Mathemagicians



We have celebrated our first 'Mathemagicians' with certificates in assembly. These were nominated by their class teachers for their effort or progress in maths. Mr Pearce, who leads maths, was very excited to present these to the children.

As you may already be aware, maths is a key focus on our [School Development Plan](#) for this academic year. So far we have been busy updating our policies, carefully mapped out the curriculum, held a workshop for Yr 4 parents on the Multiplications Check and raised the profile of the subject throughout the school.

Agents of Change

There have been some excellent examples of children taking on different challenges this term.

- ★ A parent shared how their children spent time planting 100 native tree saplings (in the very chilly January weather)
- ★ As part of their PSHE lessons, children in Owl class are hoping to raise money for a charity
- ★ A pupil in Yr 6 has worked with a group of friends to plan and present an assembly focussing on diversity and difference
- ★ The School Council have written letters to the PTFA, a local garage and a secondary school to ask for their support with playtime equipment
- ★ During the WWI Heritage workshops, 3 children in Owl class were awarded prizes for their thought provoking poetry
- ★ Children in Robins are working on their wellbeing and focussing on meditation techniques

Spring Term Diary Dates

Mon 26th Feb- Non-pupil day

Weds 28th Feb- PTFA World Book Day costume exchange (after school)

Thurs 7th Mar- World Book Day Parade 8.55am (parents invited)

W/b Mon 11th Mar- British Science week

Weds 13th Mar- Yr 4, 5, 6 Secondary transition assembly

Fri 15th Mar- Stay and play/ share and learn (parents invited into classes from 2.30pm)

Tues 19th/ Thurs 21st Mar- Parents evening

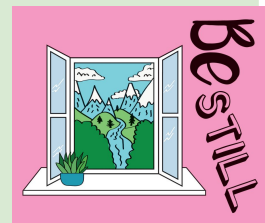
W/b Mon 18th Mar- Messing Maths week

Tues 26th Mar- Spring Arts at All Saints Church led by Kingfisher class (parents invited 9.45am)

Thurs 28th Mar- PTFA Non-Uniform, bring a bottle

Fri 29th Mar - Easter Holiday

Mon 15th Apr- Return to school



Recommended Reads

Recommended by Mrs Lewis for the grown-ups

Your Child Is Not Broken by Heidi Mavir

Recommended by Ava for EY and KS1

The Gecko and the Echo by Rachel Bright/ Jim Field

Recommended by Gacie-Sue for KS2

Letters from the Lighthouse by Emma Carroll

Word of the week

wheedle verb | wee-dul

Wheedle means to use soft words or flattery, usually for the purpose of persuading someone to do something or give you something. It is often used disapprovingly, and is frequently followed by the word into, as in "wheedle one's way into favour."

