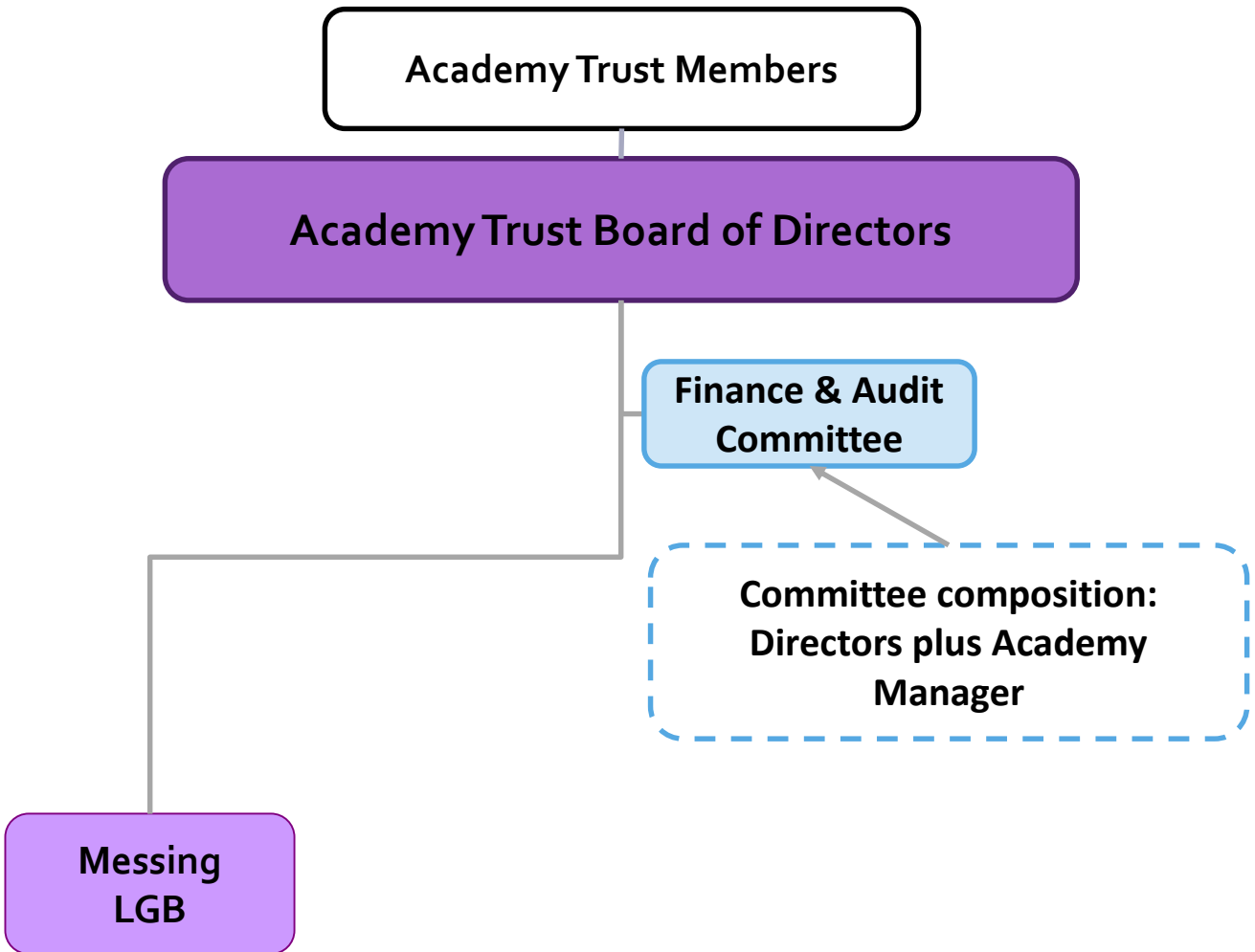


# NHMAT with Messing as a Single Academy



**GOVERNANCE**

- **6 Members**
  - NHST ( Corporate member, represented by a New Hall Governor)
  - Chair of New Hall Governors
  - Chair of NHMAT Board of Directors
  - 3 New Hall Governors (currently including 1 from Essex County Council)
- **5 Directors**
  - 3 Directors
  - CEO and Accounting Officer
  - Messing LGB Director
- **Messing LGB**
  - 6 Governors
  - Staff Governor
  - 2 Parent Governors
  - Headteacher

# NHMAT with Messing as a Single Academy

